

visioneer®

RoadWarrior 3 Series
User Guide

USER GUIDE

Visioneer® RoadWarrior 3 Series Mobile Scanner

Copyright Information

© 2024 Visioneer, Inc. All rights reserved. Visioneer is a registered trademark of Visioneer, Inc.

Changes are periodically made to this document. Changes, technical inaccuracies, and typographic errors will be corrected in subsequent editions. Information is subject to change without notice and does not represent a commitment on the part of Visioneer.

Document Version: 05-0938-300 (March 2024)

This product is covered by one or more of the following patents: 6,064,778, 6,480,304, 7,715,061, 10/838,364, 7,397,587.WO 02/25571, 7,617,985, 11/140,653, 10/787,912

Reproduction, adaptation, or translation without prior written permission is prohibited, except as allowed under the copyright laws. Copyright protection claimed includes all forms of matters of copyrightable materials and information now allowed by statutory or judicial law or hereinafter granted, including without limitation, material generated from the software programs which are displayed on the screen such as styles, templates, icons, screen displays, looks, etc.

The software described is furnished under a licensing agreement. The software may be used or copied only in accordance with the terms of such an agreement. It is against the law to copy the software on any medium except as specifically allowed in the licensing agreement. No part of this document may be reproduced or transmitted in any form or by any means, electronic or mechanical, including photocopying, recording, or information storage and retrieval systems, or translated to another language, for any purpose other than the licensee's personal use and as specifically allowed in the licensing agreement, without the express written permission of Visioneer.

ISIS® is a registered trademark of EMC²® Corporation in the United States and/or other countries.

Adobe®, Adobe® Acrobat®, Adobe® Reader®, and the Adobe® PDF logo are registered trademarks of Adobe Systems Incorporated in the United States and/or other countries.

Post-It® is a registered trademark of 3M in the United States and/or other countries.

Microsoft is a U.S. registered trademark of Microsoft Corporation. Windows™ is a trademark and SharePoint® is a registered trademark of Microsoft Corporation.

Kensington® is a registered trademark of ACCO Brands Corporation.

ZyINDEX is a registered trademark of ZyLAB International, Inc. ZyINDEX toolkit portions, Copyright © 1990-1998, ZyLAB International, Inc.

All other products mentioned herein may be trademarks of their respective companies and are hereby acknowledged.

Visioneer's Limited Product Warranty

Please go to www.visioneer.com, select your product, and then click the "Warranty Program" link to view the warranty terms and conditions for your scanner.

Restricted Rights Legend

Use, duplication, or disclosure is subject to restrictions as set forth in contract subdivision (c)(1)(ii) of the Rights in Technical Data and Computer Software Clause 52.227-FAR14. Material scanned by this product may be protected by governmental laws and other regulations, such as copyright laws. The customer is solely responsible for complying with all such laws and regulations.

RoHS and WEEE Compliance

This product is compliant with RoHS Regulations of the European Parliament and Council Directive on the Restrictions of the Use of Certain Hazardous Substances in Electrical and Electronic Equipment (2002/95/EC), and with the Waste Electrical and Electronic Equipment (WEEE) Directive (2002/96/EC).

United States (FCC Regulations)



This equipment has been tested and found to comply with the limits for a Class B digital device, pursuant to Part 15 of the FCC Rules. These limits are designed to provide reasonable protection against harmful interference in a residential installation. This equipment generates, uses, and can radiate radio frequency energy and, if not installed and used in accordance with the instruction manual, may cause harmful interference to radio communications.

However, there is no guarantee that interference will not occur in a particular installation. If this equipment does cause harmful interference to radio or television reception, which can be determined by turning the equipment off and on, the user is encouraged to try to correct the interference by one or more of the following measures:

- Reorient or relocate the receiving antenna.
- Increase the separation between the equipment and receiver.
- Connect the equipment into an outlet on a circuit different from that to which the receiver is connected.
- Consult the dealer or an experienced radio/TV technician for help.

This device complies with Part 15 of the FCC Rules. Operation is subject to the following two conditions: (1) This device may not cause harmful interference, and (2) this device must accept any interference received, including interference that may cause undesired operation.

Changes and modifications to this equipment not specifically approved by Visioneer may void the user's authority to operate this equipment.

Shielded cables must be used with this equipment to maintain compliance with FCC regulations.

ENERGY STAR for the USA

Energy Program compliance

As an ENERGY STAR® partner, Visioneer Inc. has determined that this product meets the ENERGY STAR guidelines for Imaging Equipment.



ENERGY STAR and the ENERGY STAR mark are registered trademarks owned by the U.S. Environmental Protection Agency. The ENERGY STAR Imaging Equipment Program is a team effort between the U.S., European Union and Japanese governments and the office equipment industry to promote energy-efficient copiers, printers, fax, multifunction machine, personal computers, and monitors. Reducing product energy consumption helps combat smog, acid rain and long-term changes to the climate by decreasing the emissions that result from generating electricity.

Visual Display

WARNING: This device is not intended for use in the direct field of view at visual display workplaces. To avoid incommoding reflections at visual display workplaces, this device must not be placed in the direct field of view.

Class 1 LED

This machine is certified as Class 1 LED product. This means that this machine does not produce hazardous laser radiation.

Product Recycling & Disposal

If you are managing the disposal of your Visioneer® RoadWarrior™ Series Mobile Scanners, please note that the product may contain lead, mercury, Perchlorate, and other materials whose disposal may be regulated due to environmental considerations. The presence of these materials is fully consistent with global regulations applicable at the time that the product was placed on the market. For recycling and disposal information, contact your local authorities. In the United States, you may also refer to the Electronic Industries Alliance web site: <http://www.eiae.org>.

Perchlorate Material - This product may contain one or more Perchlorate-containing devices, such as batteries. Special handling may apply, please see: <https://dtsc.ca.gov/perchlorate/>.

Safety

Notices and Safety

Please read the following instructions carefully before operating the machine and refer to them as needed to ensure the continued safe operation of your machine.

Your Visioneer® RoadWarrior™ Series Mobile Scanners and supplies have been designed and tested to meet strict safety requirements. These include safety agency evaluation and certification, and compliance with electromagnetic regulations and established environmental standards.

WARNING: The safety and environment testing and performance of this product have been verified using Visioneer® materials only. Unauthorized alterations, which may include the addition of new functions or connection of external devices, may impact the product certification. Please contact your Visioneer representative for more information.

Operational Safety Information

Your Visioneer® RoadWarrior™ Series Mobile Scanners and supplies have been designed and tested to meet strict safety requirements. These include safety agency examination, approval, and compliance with established environmental standards.

To ensure the continued safe operation of your Visioneer® RoadWarrior™ Series Mobile Scanners, follow these safety guidelines at all times:

Do these:

- Always follow all warnings and instructions that are marked on or supplied with the equipment.
- Always use materials specifically designated for this product, the use of other materials may result in poor performance and create a hazardous situation. Do not use aerosol cleaners, they may be explosive and flammable under certain conditions.
- Always exercise care when moving or relocating equipment.
- Always locate the machine on a solid support surface that has adequate strength to support the weight of the machine.
- Always locate the machine in an area that has adequate ventilation and room for servicing.

Do not do these:

- Never attempt any maintenance function that is not specifically described in this documentation.
- Never remove covers or guards that are fastened with screws. There are no operator serviceable areas within these covers.
- Never locate the machine near a radiator or any other heat source.
- Never override or “cheat” any of the electrical or mechanical interlock devices.
- Always unplug this equipment from the electrical outlet before cleaning.

Emergency Power Off

If any of the following conditions occur, turn off the scanner immediately and disconnect the power cable(s) from the electrical outlet(s).

- The equipment emits unusual odors or makes unusual noises.
- The power cable is damaged or frayed.
- A wall panel circuit breaker, fuse, or other safety device has been tripped.
- Liquid is spilled into the machine.
- The machine is exposed to water.

- Any part of the machine is damaged.

Maintenance Information

- Any operator product maintenance procedures will be described in the user documentation supplied with the product.
- Do not carry out any maintenance on this product which is not described in the customer documentation.
- Do not use aerosol cleaners. The use of cleaners that are not approved may cause poor performance of the equipment, and could cause a dangerous condition.
- Use supplies and cleaning materials only as directed in this manual.
- Do not remove covers or guards that are fastened with screws. There are no parts behind these covers that you can maintain or service.
- Do not perform any maintenance procedures unless you have been trained to do them by an authorized local dealer or unless a procedure is specifically described in the user manuals.
- Never place this equipment where people might step on or trip on the power cord.

CONTENTS

- Preface 3
- Welcome 5
 - What's in the Box 5
 - System Requirements 5
 - Documentation 6
 - The Visioneer® RoadWarrior 3 Series Scanner Features 6
- Setup 9
 - Unpacking the Visioneer® RoadWarrior 3 Series 9
 - Connect the scanner power to the PC 9
 - Safety Lock 10
- Installation 11
 - Windows Installation 11
 - Windows USB Driver Installation 11
 - Mac Installation 14
 - Scanning with Storage Scanner on Big Sur 18
 - Installing Additional Applications 20
 - View the User Guides 20
 - Register Your Scanner 21
- Loading Documents to Scan 23
 - Supported Document Types 23
 - Documents to Avoid Scanning 24
 - Unsupported Document Types 24
 - Choosing the Paper Return Position (RoadWarrior 3/3g Only) 25
 - Scan from the Front Feed Tray 25
 - Configuring OneTouch Autolaunch in Windows 26
 - Scan using AutoLaunch in Window 27
 - Scanning Interfaces 28
 - Windows 28
 - Mac 30
- Maintenance 31
 - Safety Precautions 31
 - Hardware Properties 32
 - Windows 32

Mac	33
Clearing Paper Jams	34
Cleaning the Scanner	35
Additional Cleaning Method	36
Calibrating Your Scanner	37
Windows	37
Mac	39
Troubleshooting	40
Status Light Troubleshooting	42
Uninstalling Your Scanner	43
Windows	43
Mac	44
Visioneer® RoadWarrior 3 Series Specifications	44
Visioneer® RoadWarrior 3 Series Parts List	46
Appendix A: Copy Regulations	47
United States	47
Canada	48
Other Countries	49
Appendix B: Compliance Information	51
Product Recycling & Disposal	51
USA & Canada	51
European Union	51

PREFACE

Important! This user's guide covers the following Visioneer scanners:

- Visioneer RoadWarrior 3
- Visioneer RoadWarrior 3g
- Visioneer RoadWarrior Lite
- Visioneer RoadWarrior Pro Bundle LE
- Visioneer RoadWarrior X3

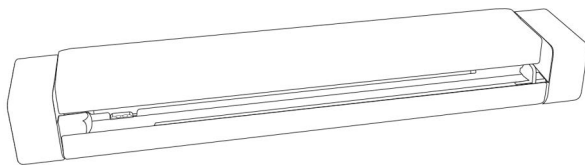
These Visioneer scanners share the same basic features, but some options are specific to certain models. The model-specific features are identified in this user's guide.

Note: the RoadWarrior 3 scanner illustrations and on-screen windows are used as representative examples of what you will see. Most of the images and screens are similar and any significant model-specific differences are indicated.

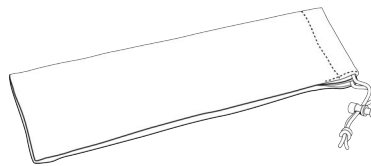
WELCOME

WHAT'S IN THE BOX

Before proceeding, check the contents of the box. If items are missing or damaged, contact the dealer where you purchased the scanner.



Visioneer RoadWarrior 3 / Lite / Pro / X3 Scanner



Carrying Bag (not available with RoadWarrior Lite)



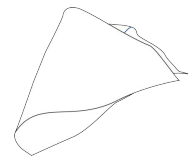
Quick Install Guide



USB Cable



Calibration Page



Cleaning Cloth

SYSTEM REQUIREMENTS

- Intel® Pentium® 4 or equivalent processor
- An available Universal Serial Bus (USB) port
- Apple® Mac OS X® operating system (10.9 – 10.13)
- Microsoft® Windows® operating system:
 - 32-bit or 64-bit Windows 7 (Service Pack 1)
 - 32-bit or 64-bit Windows 10
 - 64-bit Windows 11
- Minimum of 2 gigabyte (GB) of internal memory (RAM)
- Minimum available hard disk space:
 - 350 MB for the scanner driver
 - 750 MB for Visioneer OneTouch

- 1 to 2 GB for each additional application
- Monitor (recommended settings):
 - Color quality of 16-bit or 32-bit
 - Resolution set to at least 800 x 600 pixels

Refer to your Windows documentation for instructions on setting the color quality and resolution for the monitor.

DOCUMENTATION

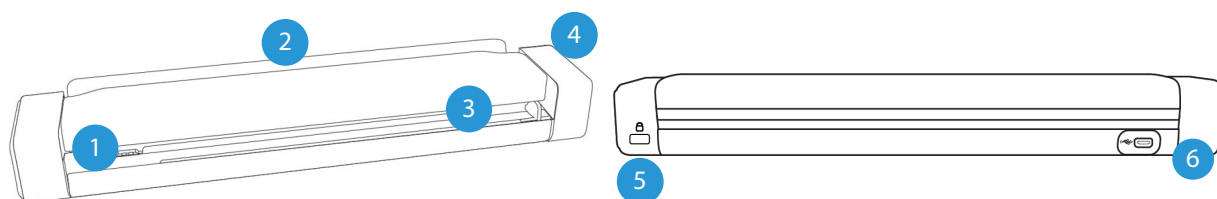
The following printed documentation is provided in the box:

- **Installation guide** — abbreviated device setup and installation instructions.
- **Technical Support, Warranty and Review Cards** — contact information for technical support and customer service, and a brief overview of our standard product warranty. Follow the instructions on the card to register your scanner. Please take a moment to write a short review of your experience with this scanner.

The following soft-copy documentation is available during installation or on www.vioneer.com:

- **Scanner user guide**—instructions for scanner setup, installation, operation, maintenance, safety, and warranty.
- **OneTouch scanning guide**—instructions for configuring and scanning using OneTouch.
- **TWAIN scanning guide**—instructions for accessing and scanning using the TWAIN interface.

THE VIONEER® ROADWARRIOR 3 SERIES SCANNER FEATURES



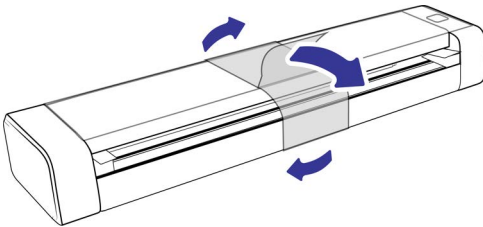
1. **Paper Feed**—place an item face up in paper feed aligned to the left side
 - **Paper sensor**—the optical sensor on the left side of the paper feed slot. Detects when an item has been inserted in the scanner.
 - **Scanner top**—can be pulled away from the scanner body to open the scanner for cleaning.
2. **Paper Return**—guides paper up from the back of the scanner as it is exited during scanning. This feature is available on the RoadWarrior 3 and 3g scanners only.
3. **Paper Guide**—helps to prevent documents from skewing while feeding through the scanner during scanning. Slide the guide left or right to adjust the guide to the width of the document you want to scan.
 - **Alignment strip**—alignment marks for common paper sizes for the paper guide.
4. **Power Button / Status light**—turns the scanner on and indicates the current state of the scanner.

5. **Safety lock slot**—slot for installing a Kensington® style safety lock (RoadWarrior Lite/Pro/X3).
6. **Universal Serial Bus (USB) port**—connects the scanner to the computer.

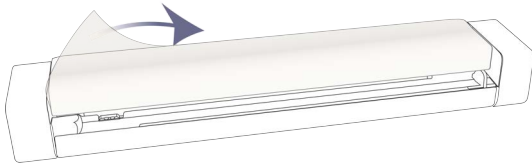
SETUP

UNPACKING THE VISIONEER® ROADWARRIOR 3 SERIES

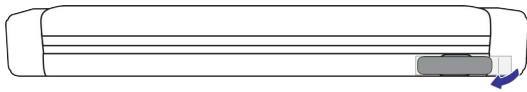
1. Remove the blue plastic strip from around the scanner.



2. Remove the clear plastic film from the top of the scanner.

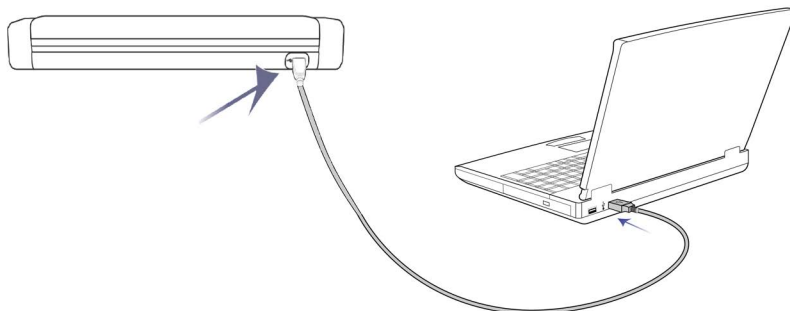


3. Remove any shipping tape from the scanner body.



CONNECT THE SCANNER POWER TO THE PC

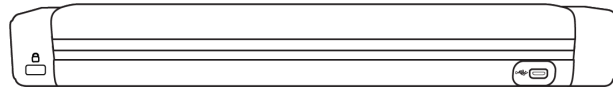
1. Plug the round end of the USB power cord into the power jack on the scanner.
2. Plug the flat end of the USB power cord into an available USB port on the back of the computer.



Note: Only use the USB power cable included with your scanner. Connecting any other type of USB power cable may damage your scanner, and will void its warranty. If you do not have your USB power cable, you can order a new one by contacting our Customer Service department. Please refer to the Technical Support Card, included with your scanner, for our company contact information, or visit the Parts & Accessories page for your scanner at www.vioneer.com.

SAFETY LOCK

Your scanner may have a slot for installing a Kensington® style safety lock. This slot can be identified by the lock icon. When following the instructions in this document, make sure you connect the USB cable into the USB port which is identified by the USB symbol.



Use this slot to install a safety lock. Do not attempt to insert any other type of object.

Use this slot to connect the provided micro USB cable to the scanner. Do not use any other type of USB cable. Do not attempt to install a safety lock in this port.

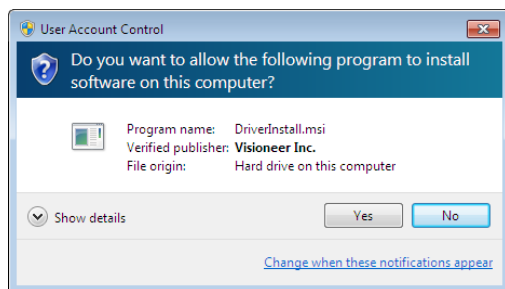
Note: A lock is not provided with the scanner and this document does not contain instructions on purchasing and installing a safety lock. If you choose to use a safety lock, please carefully read the installation instructions provided with the lock. More information about Kensington® locks can be found at www.kensington.com.

INSTALLATION

WINDOWS INSTALLATION

Please make sure of the following before you begin installation:

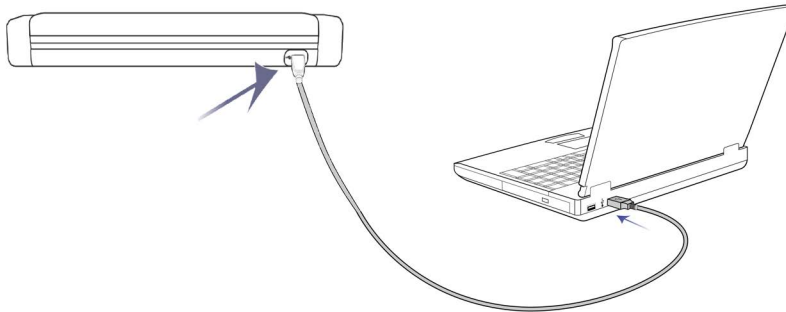
- If you are prompted to reboot during installation, please select **No**. Finish installing the rest of the software, then close all open windows and reboot your computer.
- The information in this guide may cover software not provided with the scanner you purchased. Please disregard any information about the software not applicable to your scanner.
- If your computer has AntiVirus or AntiSpyware software running, you may encounter alerts or messages during installation asking you to allow the installation to proceed. Although the messages will differ based on the software your computer is running, in each case you should allow the installation to proceed if that option is available. Alternatively, you can turn off the AntiVirus or AntiSpyware software before installing your scanner, but if you do, make sure to turn it back on again when installation is finished.
- If your computer is running Windows Vista or later, you may see the Windows User Account Control screen asking you to confirm system changes. Click the **Yes** button to allow the installation to proceed.



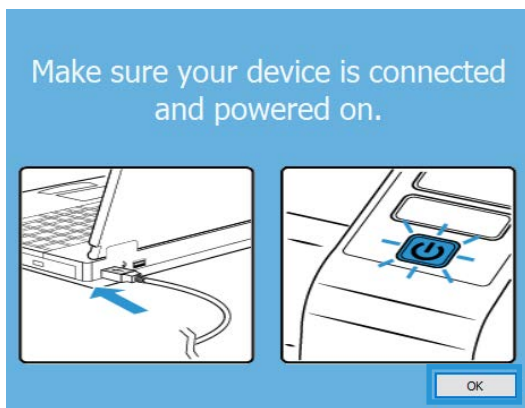
Windows USB Driver Installation

1. Start Microsoft Windows and make sure that no other applications are running.
2. Go to www.vioneer.com/install.
3. Launch the installer once the download is complete.

4. Plug the USB cable into the USB port on the scanner then into a USB port on the computer. Turn on the scanner power. Turn on the scanner power.



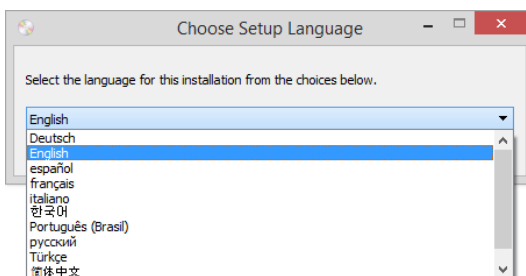
5. Click **OK**.



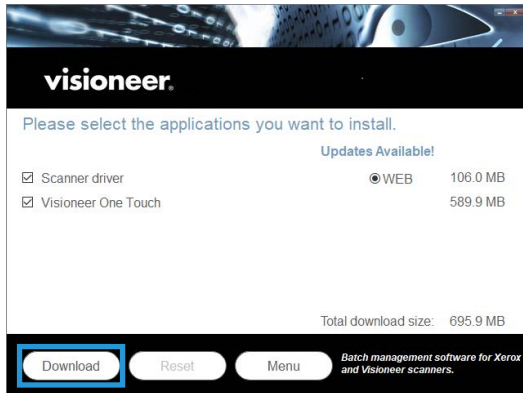
6. Select your scanner from the list. Click **Proceed**



7. The Select Language window opens. Click the drop-down menu arrow and select the language to use. Click **OK**.



8. Make sure the boxes for **Scanner Driver** and **Vioneer OneTouch** are selected, as well as any other applications you want to install.

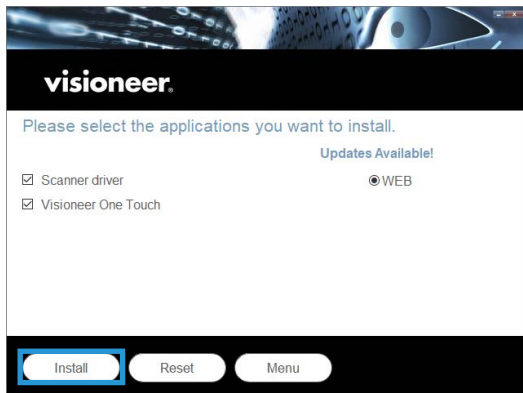


The software will have to first be downloaded by clicking **Download**. The total size of the download is shown at the bottom.

9. After the download has begun, it can be paused. If changes to the selections are required, it is necessary to click **Reset** while the download is paused. This will allow the settings to be changed.

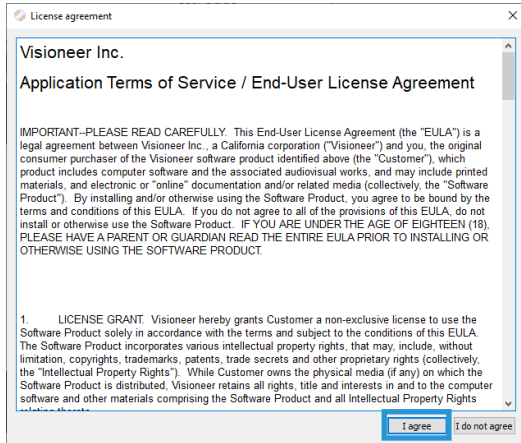
Note: Clicking the Reset button in either the Main menu or the Install menu will cause both partially completed and previously downloaded files to be deleted. In order to be installed they will have to be downloaded again.

10. Once all software has been downloaded, click **Install**.

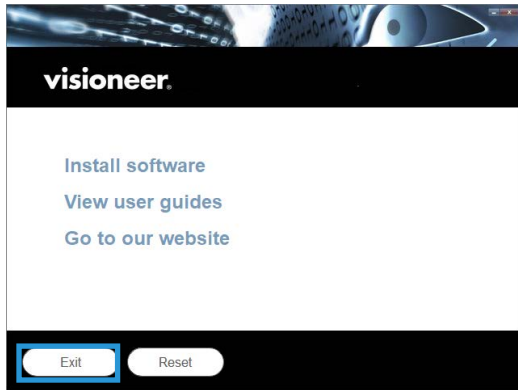


11. On the License Agreement window, read the license agreement. If you accept the terms, select **I Agree**.

If you click **I do not agree**, the installation will terminate.

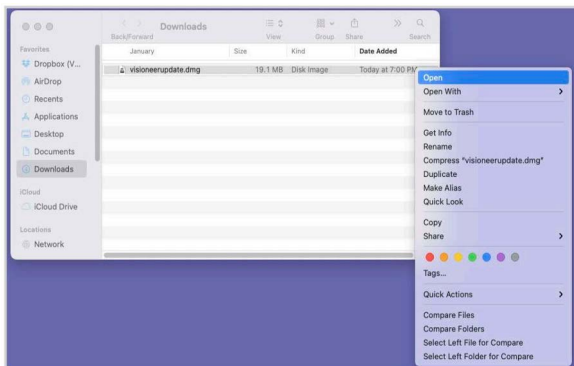


12. Once all of the software has been installed, Click **Exit**.

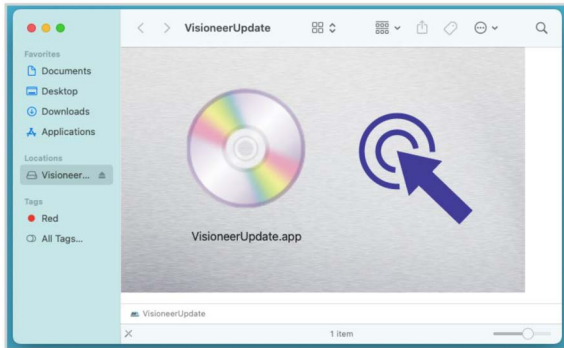


MAC INSTALLATION

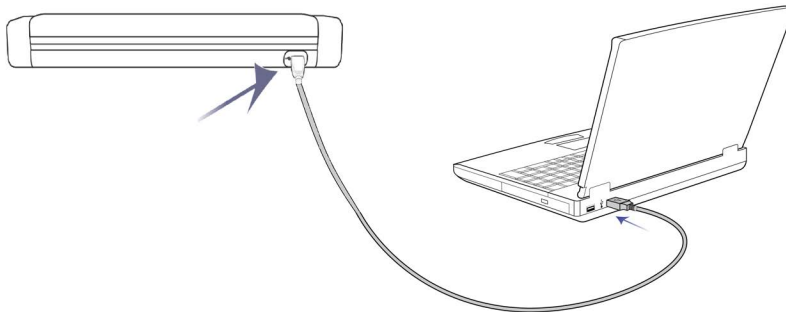
1. Start your computer and make sure that no other applications are running.
2. Go to www.visioneer.com/macinstall
3. Launch the installer once the download is complete.



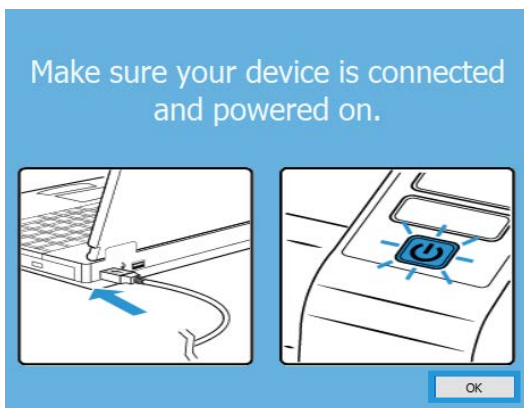
4. Double-click the VioneerUpdate disc icon.



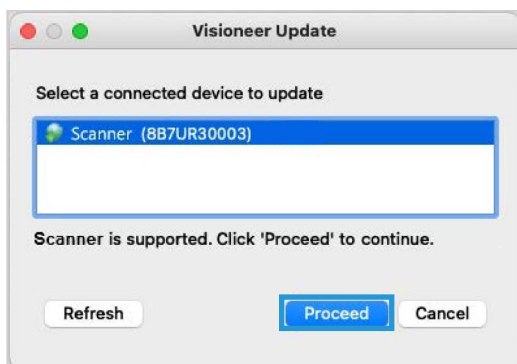
5. Plug the USB cable into the USB port on the scanner then into a USB port on the computer. Turn on the scanner power.



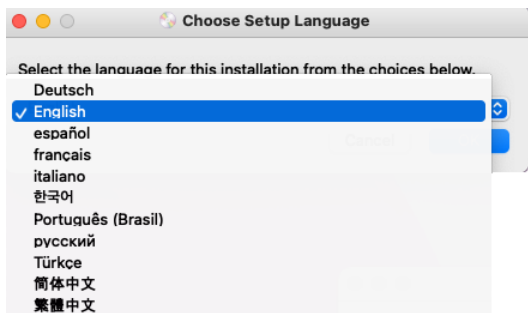
6. Click **OK**.



7. Select your scanner from the list. Click **Proceed**.

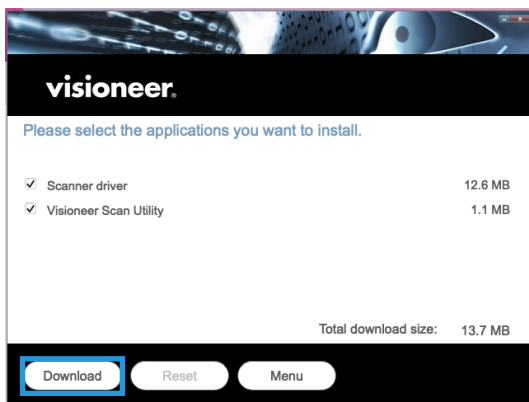


- The Select Language window opens. Click the drop-down menu arrow and select the language to use. Click **OK**.



- Make sure the boxes for **Scanner Driver** and **Visioneer Scan Utility** are selected, as well as any other applications you want to install.

Visioneer Scan Utility — This utility uses the scanner’s TWAIN interface for scanning. You can select a destination folder on your computer and save the image as any one of several popular image file formats (BMP, JPG, GIF, TIF, Multi-Page TIF, PDF, Multi-Page PDF).

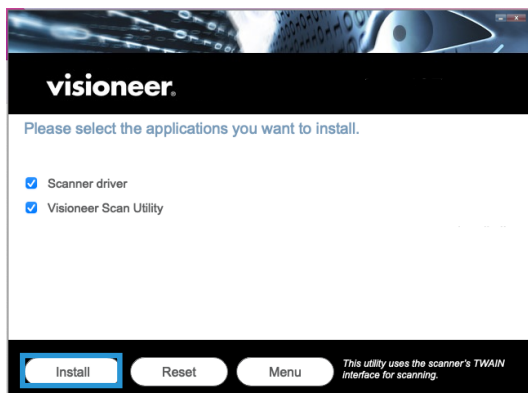


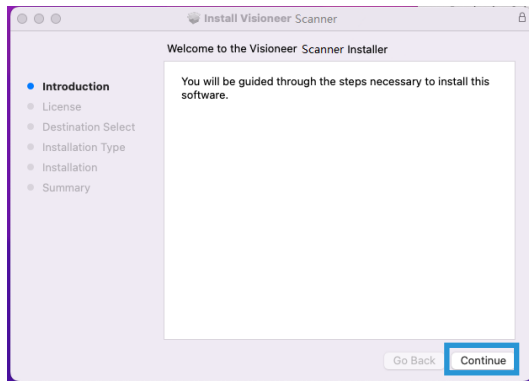
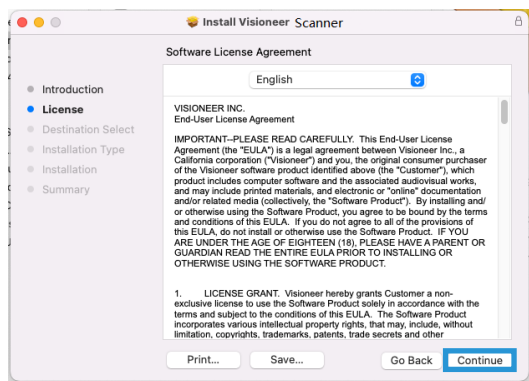
The software will have to first be downloaded by clicking **Download**. The total size of the download is shown at the bottom.

- After the download has begun, it can be paused. If changes to the selections are required, it is necessary to click **Reset** while the download is paused. This will allow the settings to be changed.

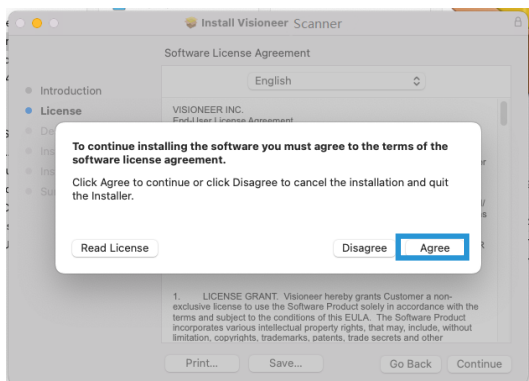
Note: Clicking the Reset button in either the Main menu or the Install menu will cause both partially completed and previously downloaded files to be deleted. In order to be installed they will have to be downloaded again.

- Once all software has been downloaded, click **Install**.

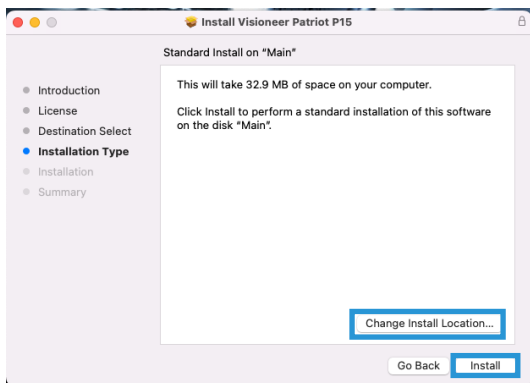


12. Click **Continue**.13. On the License Agreement window, read the license agreement and click **Continue**.14. If you accept the terms, select **Agree** and continue with the installation.

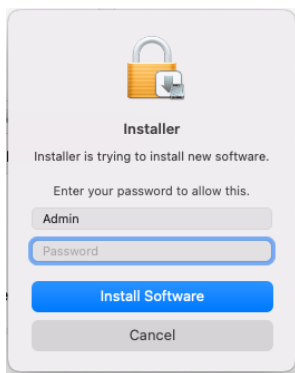
If you choose not to accept the license agreement, close the installation window. The scanner driver will not be installed.



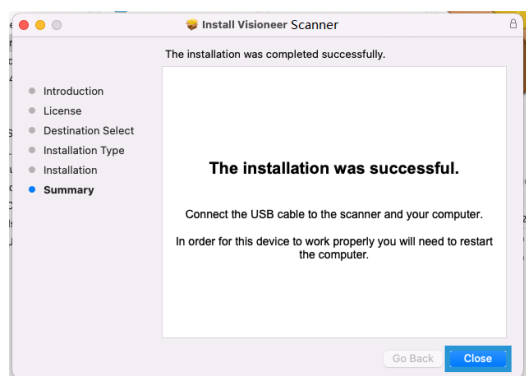
- Depending on your system configuration, you may be prompted to choose a location for the installation. We recommend that you select the main disc drive and click **Install**.



- If you are prompted for a password, input the name and password for a user that has permission to install software on your computer.



- Click **Close** on the installation complete window.
You can now connect the scanner to your computer.



Scanning with Storage Scanner on Big Sur

To allow installation of software that uses legacy kernel extension, start up your computer in macOS Recovery.

Note: This section is only for Mac M1 devices.

- Choose **Apple menu > Shut Down**.
- Press and hold the power button on your Mac until you see 'Loading startup options'.

3. Click **Options**, then click **Continue**.
4. If requested, enter the password for an administrator account.

Setting the security policy

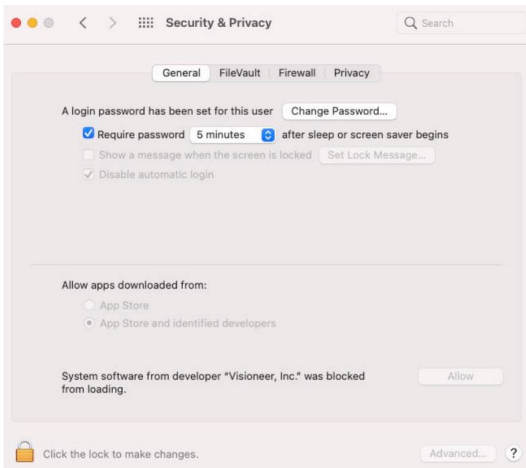
1. In the Recovery app, choose **Utilities > Startup Security Utility**.
2. Select the system you want to use to set the security policy.
3. If the disk is encrypted with FileVault, click **Unlock**, enter the password, then click **Unlock**.
4. Click **Security Policy**.
5. Select **Reduced Security**, enter your administrator user name and password, then select the 'Allow user management of kernel extensions from identified developers' checkbox.
6. Click **OK**.
7. Restart your Mac for the changes to take effect.

To allow system software that was blocked from loading:

1. Install the driver package.
2. Click **Open Security Preferences** if the System Extension Blocked dialog pops up during installation.



3. Unlock 'Security & Privacy', then click **Allow**.

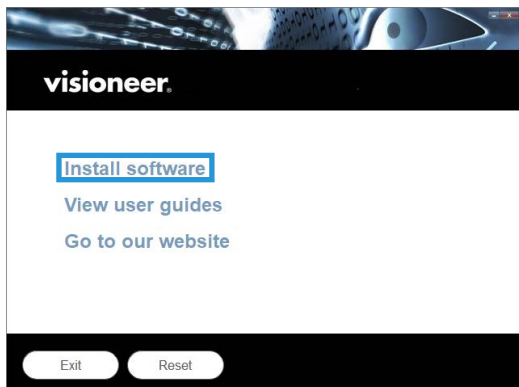


4. Restart your Mac so that the new system extensions can be used.

INSTALLING ADDITIONAL APPLICATIONS

Your scanner includes free, additional applications as described in the table below.

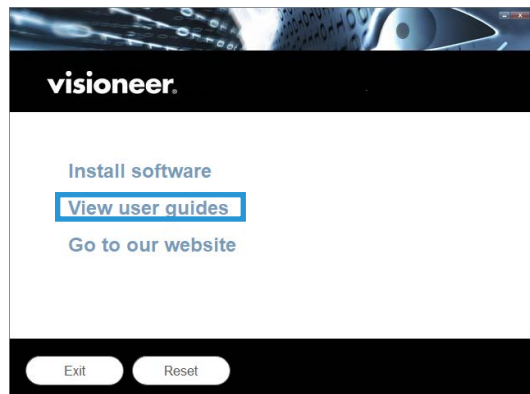
1. Once all of the software has been installed, click on **Install Software**.



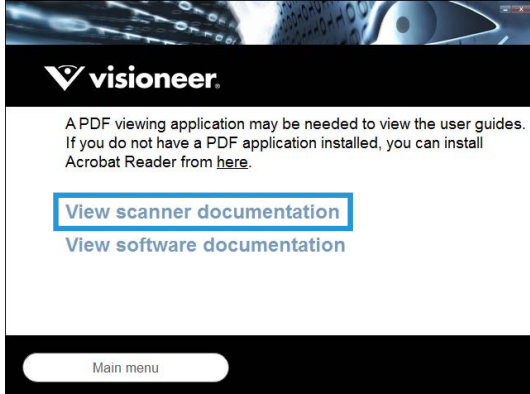
2. If a version of the software is already installed on the system, the option will be greyed out. However, if there is a newer version available, it will be possible to download and install.
3. The software will have to first be downloaded by clicking **Download**.
4. Once all software has been downloaded, click **Install** now.
5. Follow the instructions on the screen to install each of the additional applications.

VIEW THE USER GUIDES

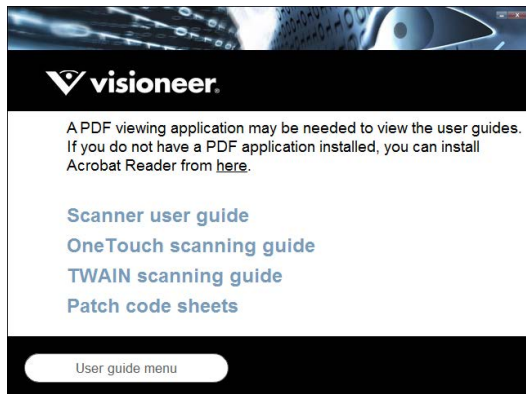
1. Once all of the software has been installed, click on **View user guides** from the Main menu.



- Click on **View scanner documentation** to access the scanner user guide and scanning guides for OneTouch and TWAIN.



- Click the links of the guides you want to view.



- Click on the **User guide menu button** to return to the main user guide window, then select the other documentation section to view the user guides.
- When you're finished, click **Main menu** to return to the Main menu window and click **Exit**.

REGISTER YOUR SCANNER

Registering your scanner is important as it provides you with access to our free telephone support service. Registration also gives you free access to software updates for your scanner.

To register your scanner:

You will need an active Internet connection to register your scanner. If you do not have Internet access you can contact our customer service department to register the scanner. Please refer to the Technical Support Card, that you received with the scanner, for our customer service contact information.

- Open an Internet Explorer window, or any other Internet browser you have installed on your computer.
- In the web address field type www.vioneer.com.
- Press Enter on your computer's keyboard or click the option on screen to go to the web address.
- When the Vioneer® scanners web page loads click on **Register Your Product**.

5. Fill in the registration form, all required fields have an asterisk (*).
A valid email address is required for registration.
6. You will be asked to enter the serial number for the scanner, it is located on the back or underside of the scanner.
7. After filling in the form, click on **Submit Your Registration** to complete the registration.

LOADING DOCUMENTS TO SCAN

Always remove any staples or paper clips from documents before inserting them into the scanner. Staples and paper clips can jam the feed mechanism and scratch the internal components. Also remove any labels, stickers, or Post-It™ notes that may come off during the scanning process and get stuck in the scanner. Misuse as described here will void your scanner's warranty. Please go to www.visioneer.com, select your product, and then click the "Warranty Program" link to view the warranty terms and conditions for your scanner.



Based on the recommended full installation of the scanner driver and the Visioneer OneTouch software, OneTouch is your main scanning interface for using the scanner. When you insert an item into the scanner, it is automatically scanned and the image is sent to a destination location or application on your computer, or to a network drive.

SUPPORTED DOCUMENT TYPES

You can scan the following types of documents and cards with this scanner.

- Document size.
 - Minimum size (width x length) – 1.5 x 1.5 inches (38 x 38 mm).
 - Maximum size (width x length) – 8.5 x 14 inches (216 x 356 mm).
 - Maximum length with long document enabled – 32 inches (813 mm).
- Paper thickness between 16–32 lb paper (60–120 g/m²).
- Plastic cards.
 - Non-embossed plastic cards up to 0.8 mm thick.

DOCUMENTS TO AVOID SCANNING

The documents in this list can be scanned, but please note that scanning documents of this type will reduce the life of the scanner. Maintenance will be required more often. These types of documents will jam more frequently and damage to the original documents may occur. If you do choose to scan these document types, do not scan large batches.

- Curled, wrinkled or folded documents may cause paper jams.
- Coated paper or photographs where the coating can flake off during scanning and leave residue in the scanner.
- Extremely smooth, shiny, or highly textured paper may cause the paper feed rollers to slip across the page and cause the scanner to report a paper jam.
- Carbonless copy paper may tear while being fed through the scanner and the pressure of the rollers may leave streaks on the page. The chemical coating on this paper will rub off on the rollers during the scan process, increasing the frequency of miss-feeds and paper jams.
- Partially transparent paper such as tracing paper as any images from the opposite side of the page or black background will appear in the scanned images.
- Thermal or photosensitive paper.

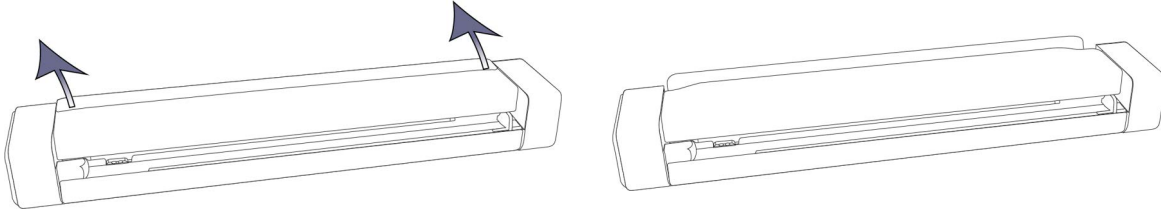
UNSUPPORTED DOCUMENT TYPES

Do not scan the following types of documents as they may cause damage to the scanner.

- Items outside of the specified supported sizes, thickness, and weight defined in this document.
- Non-rectangular or irregularly shaped paper will cause the scanner to detect and report document skew errors or paper jams.
- Carbon paper that will leave residue in the scanner and on the rollers that will transfer to the next set of documents scanned.
- Documents with hard items attached such as paper clips, binder clips, and staples.
- Documents with wet ink or white-out.
- Overhead projector sheets, plastic film, camera film, and any other type of transparent or partially transparent plastic item.
- Documents that have been glued together.
- Cloth or metallic sheets.

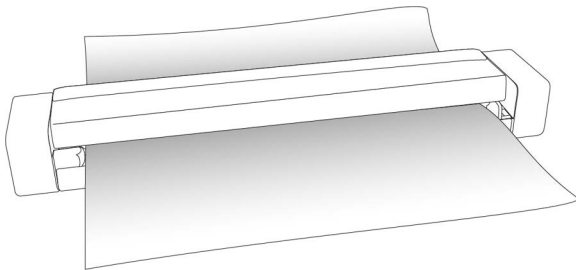
CHOOSING THE PAPER RETURN POSITION (ROADWARRIOR 3/3G ONLY)

Push lightly on the Paper Return to open and rotate the Paper Return into position.

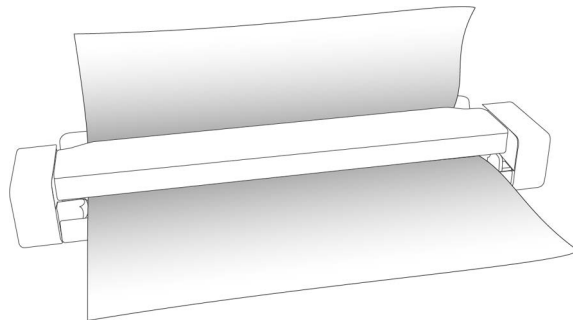


When the Paper Return is closed, any item scanned will exit out of the back of the scanner. When the Paper Return is open, it guides the paper up from the back for easy access to remove it from the scanner.

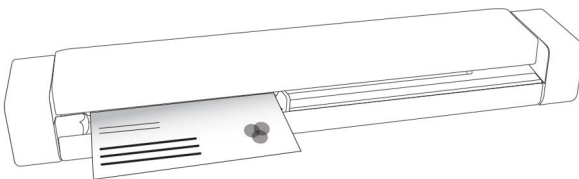
Example: Paper Return closed



Example: Paper Return open

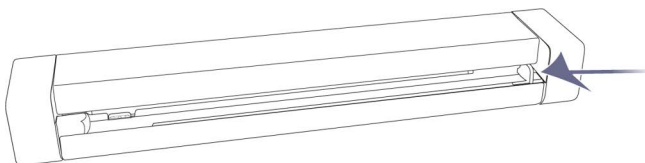


The Paper Return should be closed when scanning plastic cards, business cards, and any other type of thick paper. These items will hit the paper return and stay in the paper feed path. We do not recommend you use the Paper Return if you are scanning photos, or any other type of document where the ink or gloss may flake off due to the page being angled out of the scanner.

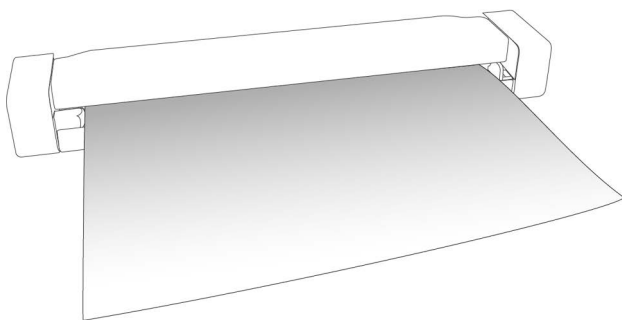


SCAN FROM THE FRONT FEED TRAY

1. Adjust the paper guide to the width of the document you want to scan.



- Align a document with the alignment arrow and insert it into the scanner, *face up*, into the paper feed slot.



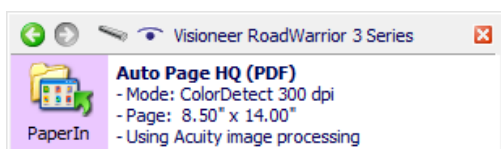
- Click on the scan button on the OneTouch button panel, or on the scanning interface from the application you are using.

Configuring OneTouch Autolaunch in Windows

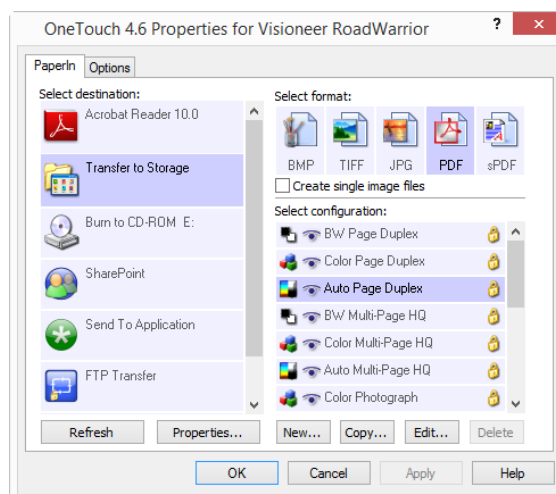
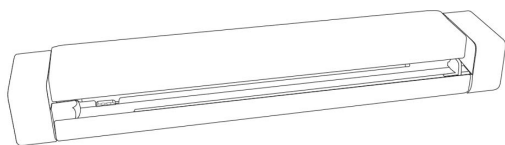
When you installed OneTouch, the software was automatically configured with appropriate settings consisting of: a **Destination Application**, a **Scan Configuration**, and a **File Format**.

You can open the OneTouch Properties window by pressing and holding the scanner button for 3 seconds, or by opening it from the OneTouch Panel on screen.

- Click on the OneTouch icon.
- Right click on the **PaperIn** button, or single left-click on the detailed information.



Right click on PaperIn, left click on the detailed information, or press and the scanner button for 3 seconds to open the OneTouch Properties



Note: Some of the options on the One Touch Properties Window are grayed out and are not available, these options are not appropriate for your scanner model.

Changing the PaperIn setting:

- Click on an application name in the **Select Destination** list.
- Select a file format in the **Select Format** panel.
- Select a scanning configuration in the **Select Configuration** list.
- Click on **OK** to save the changes.
- Place a page in the scanner.

- The scanner starts scanning and sends the image to the application, with the file format and scanning configuration you specified.

Note: Please see the OneTouch Scanning Guide. You can also click the **Help** button in the OneTouch Properties window to open the instructions in an Internet browser.

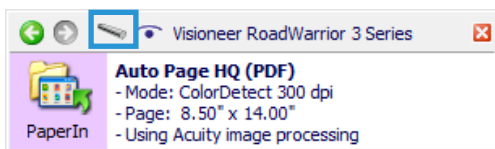
Scan using AutoLaunch in Window

If you want to scan from OneTouch button panel on screen, or to be able to place a page in the scanner and wait until you are ready to initiate the scan, you can turn the AutoLaunch feature off. This option is in the Application Settings for your scanner's hardware properties.

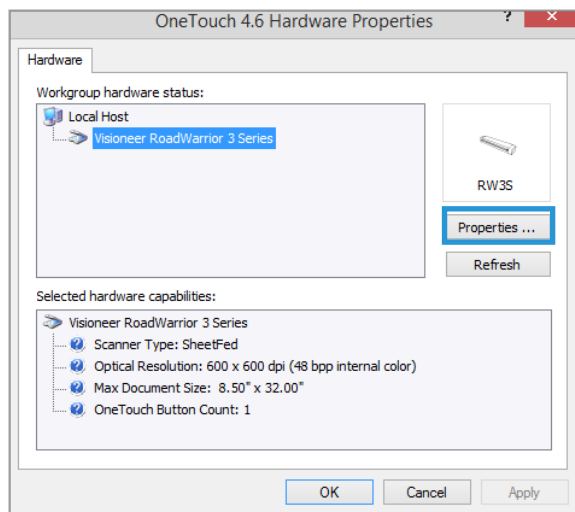
- Click on the OneTouch icon in the Windows notification area on the right side of the screen.



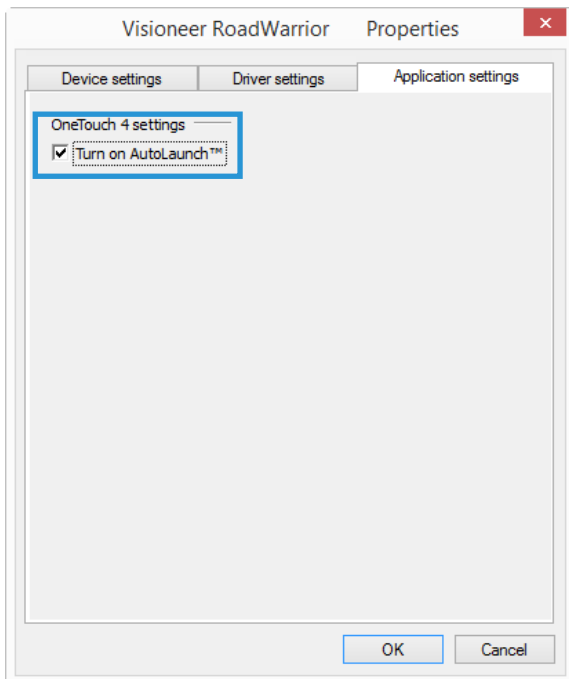
- Click on the scanner icon to the right of the green buttons, in the title bar of the OneTouch button panel.



- Click on the **Properties** button in the hardware properties window.



- In the **Application Settings** tab, click on **Turn on AutoLaunch™** to enable this option.

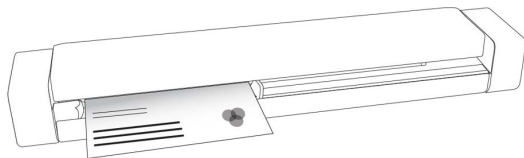


- Click on **OK** to save the changes and close the window. Click on **OK** to close the Hardware Properties window.
- Place an document face down, on the front or rear feed tray, aligned to the registration marks on the tray and insert it into the scanner.
- The scanner pulls in the page, scans and ejects it.

SCANNING INTERFACES

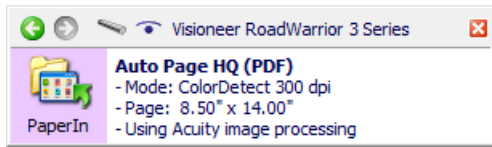
Windows

- **OneTouch AutoLaunch**—to use the scanner’s AutoLaunch feature, simply insert a document in the scanner and it is automatically scanned using predefined settings from the OneTouch software.



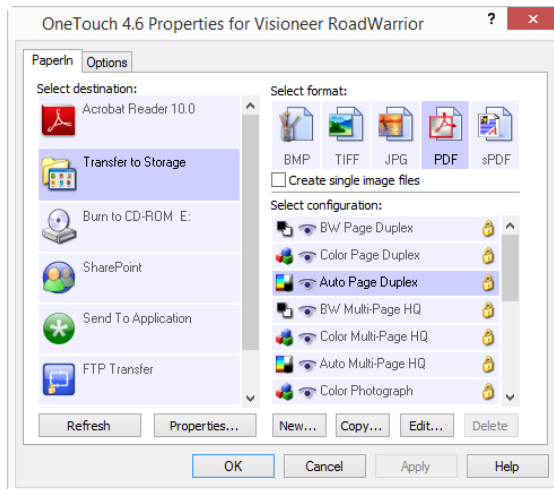
PaperIn through OneTouch AutoLaunch

- **OneTouch Button Panel**—use this scan option when you want to scan from the computer screen. This scans with the same settings as when using the AutoLaunch scanning feature.

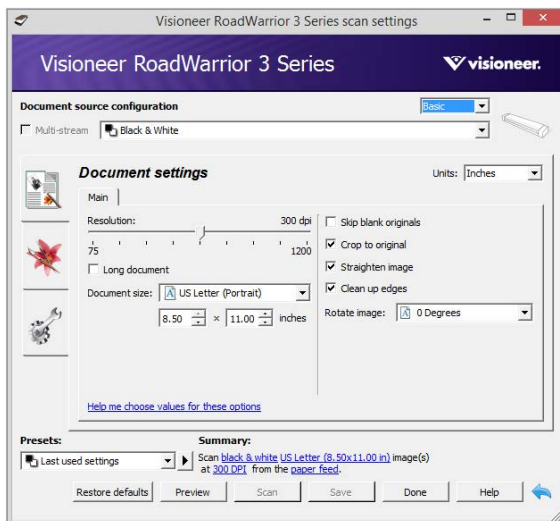


OneTouch Button Panel

Please see the OneTouch Scanning Guide on www.vioneer.com for instructions. You can also click the **Help** button in the OneTouch Properties window to open the instructions in an Internet browser.



- **TWAIN and WIA Interface**—this option uses your scanner's TWAIN interface to scan. Select scanning options before scanning, put the document in the scanner, then click the **Scan** button in the TWAIN interface window.

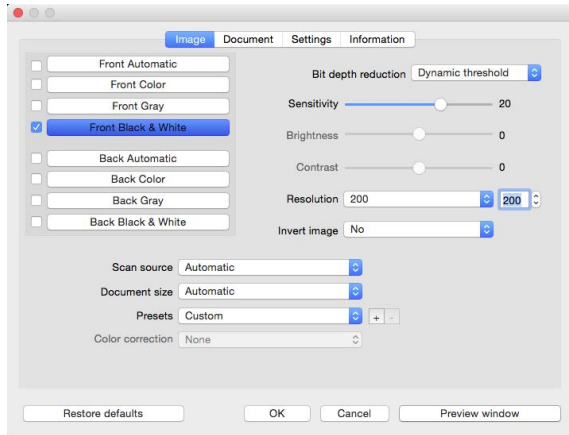


Please see the TWAIN Scanning Guide on www.vioneer.com for instructions. You can also click the **Help** button in the TWAIN interface to open the instructions in an Internet browser.

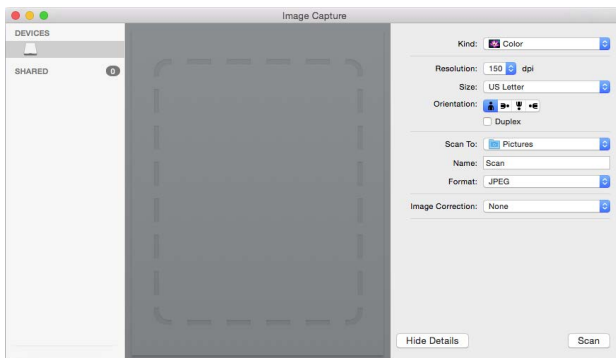
Mac

Every scanning application will access the scanner using a different method. Please refer to the application's user guide for instructions on using the application and accessing the scanner.

- **TWAIN Interface**—this option uses your scanner's TWAIN interface to scan. The TWAIN scanning interface can be accessed from any TWAIN scanning application you have installed on the computer.



- **ICA Interface**—this option uses the Apple Mac Image Capture Application (ICA) interface to scan. You can access the ICA interface from the Image Capture application.



MAINTENANCE

This section contains information about maintenance, troubleshooting, uninstalling, scanner specifications, and spare parts.

SAFETY PRECAUTIONS

When servicing the scanner you should take the following precautions to ensure your safety and prevent damage to the scanner.

Do These

- Wear protective gloves when cleaning the scanner with Isopropyl rubbing alcohol. Rubbing alcohol may irritate sensitive skin.
- Only perform scanner maintenance as described in this chapter.
- Keep the scanner and cleaning supplies away from any open flame or heat source as any form of alcohol is flammable.
- Always read the instructions in each section carefully, the instructions are specific to the part you are installing or servicing.
- Move the scanner to an area that has adequate room for opening the scanner.
- Always unplug the USB cable from the scanner before performing maintenance, unless the maintenance instructions below specifically state to leave the scanner plugged in.
- Wear an anti-static strap to prevent electrostatic discharge when touching metal components.
- Keep all cleaning supplies, scanner parts and accessories out of the reach of children.

Do Not Do These

- Never attempt installation of any part not described in this manual.
- Never service the scanner near a radiator or any other heat source.
- Never use aerosol sprays or compressed air, or attempt to lubricate parts with an oil or silicon spray.
- Never service the scanner in an area where there are open liquid containers.
- Never pour or spill liquid on the scanner or any of its components.

HARDWARE PROPERTIES

You can use the scanner's properties page to keep track of scanner maintenance, change some of the hardware options, configure the scanner interface behavior, and adjust application options that may be available for your scanner.

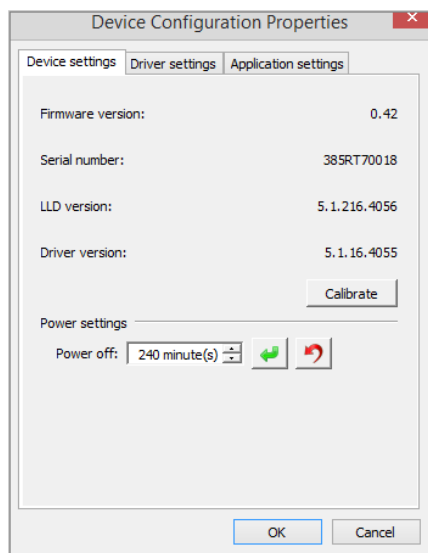
Windows

To open the scanner hardware properties page:

- **Windows 7** and later—from the Windows Control Panel, open **Hardware and Sound** and then **Devices and Printers**. Right-click on the scanner and then select **Scan properties** from the list.
- **Windows Vista**—from the Windows Control Panel, open **Hardware and Sound** and then **Scanners and Cameras**. Click on the scanner icon then click on the **Properties** button.
- **Windows XP**—from the Windows Control Panel when in category view, open **Printers and Other Hardware** and then **Scanners and Cameras**. Right-click on the scanner and then select **Properties** from the list.

Device Settings

The Device Settings tab shows the hardware information for your scanner. The options on the Device Settings tab will be available based on whether or not the scanner hardware supports the feature. Please disregard any information about features that you do not see in the interface for your scanner.



Scanner Details

- **Firmware version**—this is the scanner's hardware processor version number.
- **Serial number**—the scanner's unique identification number.
- **LLD version**—the scanner's base driver version. This is not the OneTouch software revision, TWAIN or WIA driver versions.
- **Driver version**—this is the version of the scanner's TWAIN driver.

Scanner Settings

- **Calibrate**—the scanner needs to be calibrated as part of your monthly maintenance of the scanner. You will need the calibration page provided with the scanner. Click the **Calibrate** button to start the utility. Follow the instructions on-screen to calibrate the scanner.

Power Settings

Note: The RoadWarrior Lite/Pro/X3 will power off automatically after 10 minutes of no activity and cannot be changed.

- **Power off**—input the number of minutes you want the scanner to wait before it turns itself off.
 - Click the **green enter** button to save any changes in the power off field.
 - Click the **red reset** button to reset to the default timeout value.

Note: When the scanner is powered off, firmly press the button on the scanner to turn the scanner on. Once the scanner is turned on, it is always on and receiving power until it automatically powers off. Pressing the scanner button will not turn off the scanner.

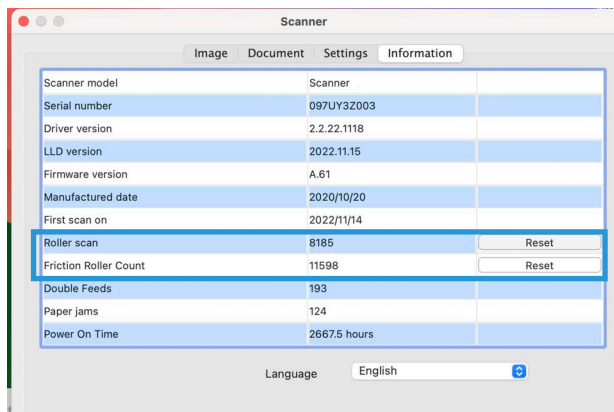
Mac

The Vioneer Scan Utility

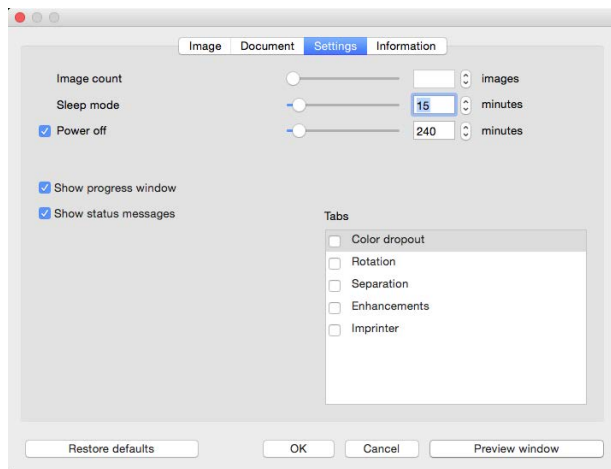
In addition to the scanner's interface, you can customize the scanner settings using the **Vioneer Scan Utility**, explained in the TWAIN Scanning Guide.

Note: On our website, please refer to the TWAIN Scanning Guide provided for your device: www.vioneer.com.

For example, the Information panel shows hardware information for your scanner, including controls for resetting the Roller Count. (Resetting the roller count is typically done after cleaning.)



And the Settings panel provides sleep and power off configuration settings.



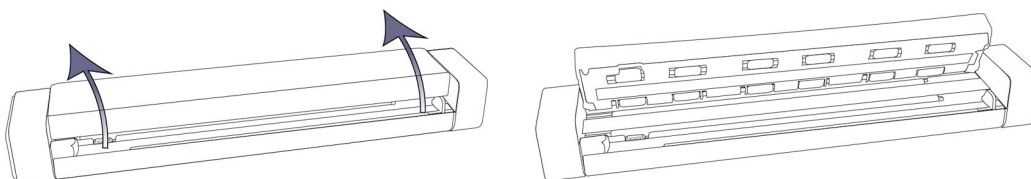
- **Image count** — set the number of images to scan before ending the scan job. When it is set to Infinite it will scan all the pages in the input tray. It can be adjusted using the slider or by entering a value in the text box.
- **Sleep mode** — sleep mode is the low-power state when the scanner is not in use. You can adjust the amount of time you want the scanner to wait before it goes into low power using the slider or by entering a value in the text box.
- **Power off** — input the number of minutes you want the scanner to wait before it turns itself off. It can be adjusted using the slider or by entering a value in the text box.
Note: The RoadWarrior Lite/Pro/X3 will power off automatically after 10 minutes of no activity and cannot be changed
- **Show progress window** — select this option to display the progress window of the document(s) during scanning.
- **Show status messages** — select this option to show warning messages on-screen when the scanner rollers or pads have reached the end of their lifespan.

CLEARING PAPER JAMS

If your scanner stops scanning due to a paper jam, a warning opens after a few moments.

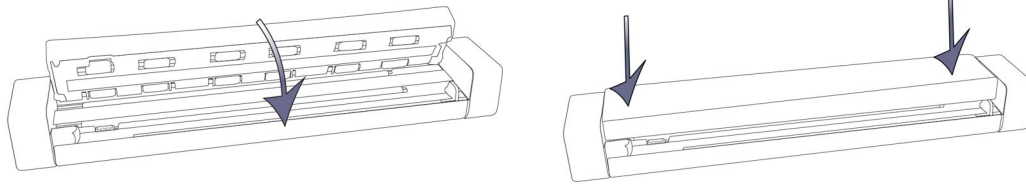
WARNING: Do NOT attempt to remove the jammed page with the scanner closed. Damage to the scanner will occur if forcing the page out of the scanner. Follow the instructions below to remove the jammed page.

1. Place your thumbs on either side of the paper feed slot, underneath the lid of the scanner. Hold the scanner sides firmly and pull the scanner lid up to release it from the body of the scanner.
 Use both hands to open the scanner, the lid is held down with locking arms on both sides of the paper feed slot. If you open only one side, you may damage the scanner lid.



2. Remove the jammed paper and close the cover.

Gently close the scanner lid. Press down on both sides of the lid until you hear a click as the arms lock the scanner lid in place.



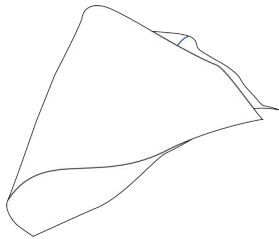
To reduce the number of paper jams, smooth and straighten the paper before scanning, and insert the paper evenly into the scanner.

CLEANING THE SCANNER

Clean the inside of the scanner to remove dust and paper debris from the scanner glass, pickup and feed rollers. Cleaning the inside of the scanner helps to keep your scanner operating at optimum performance. Dust accumulation on the rollers will prevent documents from feeding straight through the scanner, dust on the scanner glass will appear as lines in the scanned image.

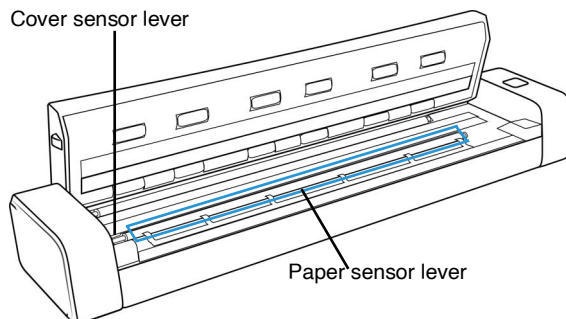
You should clean the inside of the scanner at least once a week or as needed depending on how often the scanner is used. If cleaning the scanner does not resolve any image quality issues, please follow the instructions in the next section for calibrating the scanner.

You will need the cleaning cloth provided with your scanner.

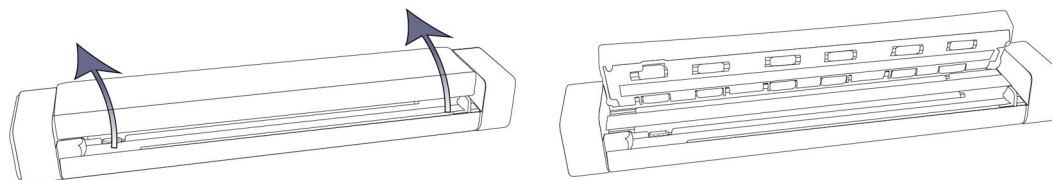


Caution: Use care when cleaning the scanner to avoid damaging the sensors. The paper sensor and scanner cover sensor are plastic levers inside the scanner. They are fragile and can break.

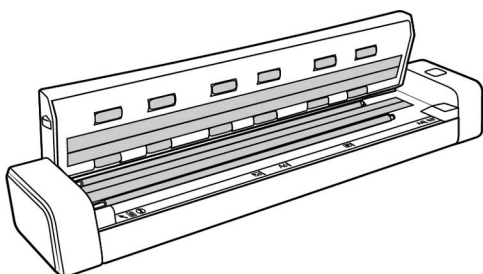
The paper sensor lever runs along the front of the scanner. If the paper sensor becomes damaged, the scanner will no longer detect when paper has been inserted into the scanner. The cover sensor is located on the left end of the feed roller. If the cover sensor becomes damaged, the scanner will no longer detect when the cover is closed.



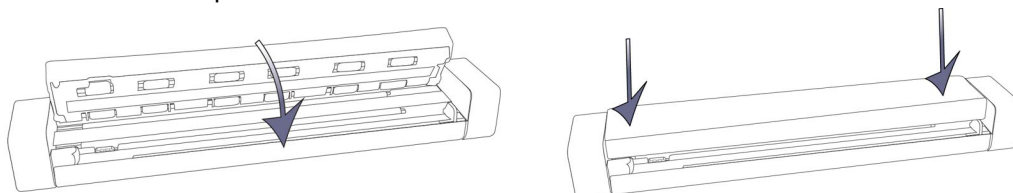
1. Place your thumbs on either side of the paper feed slot, underneath the lid of the scanner. Hold the scanner sides firmly and pull the scanner lid up to release it from the body of the scanner.
Use both hands to open the scanner, the lid is held down with locking arms on both sides of the paper feed slot. If you open only one side, you may damage the scanner lid.



2. Using the cleaning cloth, wipe down all surfaces in the scanner. Make sure to clean the glass in the underside of the scanner lid and the feed rollers in the body of the scanner.



3. Gently close the scanner lid. Press down on both sides of the lid until you hear a click as the arms lock the scanner lid in place.



Additional Cleaning Method

The standard cleaning method for your scanner is to use the dry cleaning cloth in the scanner. If lines, smudges or blurry areas are still in the scanned image you can try cleaning the scanner with Isopropyl rubbing alcohol.

Please use caution when cleaning the scanner and take appropriate care to prevent injury, skin irritation, or damage to the scanner.

- Scanner cleaning cloth.
- A bottle of 70% solution Isopropyl rubbing alcohol.
- Protective rubber or latex gloves.
- Protective eye glasses.

Follow the instructions in the previous section to clean the scanner. However, dampen the cleaning cloth with the Isopropyl rubbing alcohol before cleaning the inside surfaces of the scanner.

CALIBRATING YOUR SCANNER

If your scanned images have black or colored vertical lines and cleaning does not resolve the problem, this may be a sign that you need to perform a calibration.

The scanner should be calibrated as part of your monthly maintenance of the scanner. If the scanner is used daily you may need to calibrate the scanner more often. You will need to have the calibration page ready.



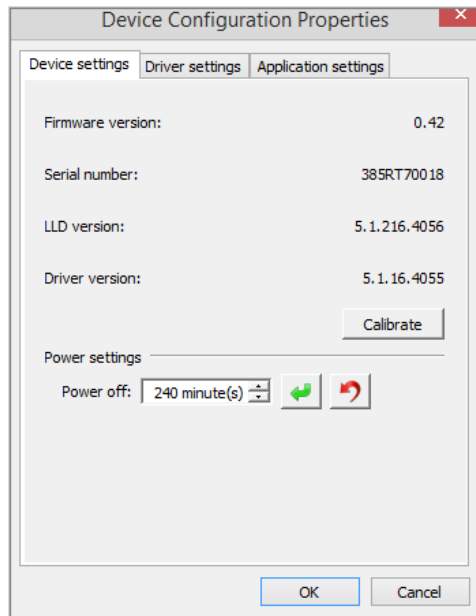
Caution: Do not attempt to calibrate the scanner with any other type of document (i.e. white paper or a copy of the calibration page).

The calibration routine will fail and indicate the failed calibration by flashing a red LED on the scanner. A calibration page was included with your scanner, if you do not have one available, you can order a replacement from the Parts & Accessories page for your scanner at www.vioneer.com.

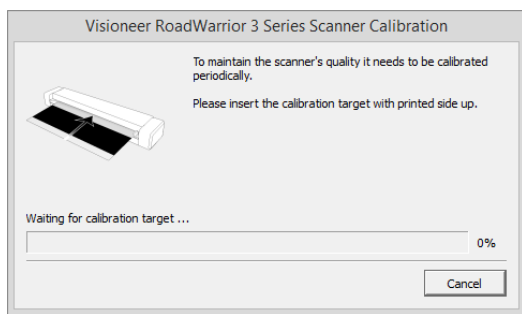
Windows

To calibrate the scanner:

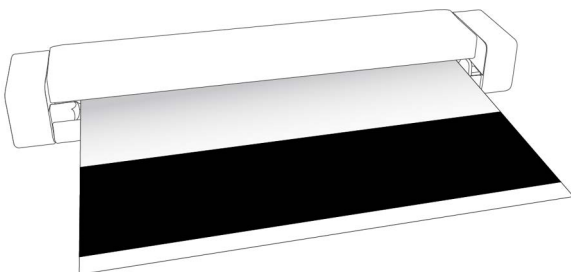
1. Open the scanner's hardware properties page as described on page 32.
2. Click on the **Device Settings** tab.



3. Click on the **Calibrate** button to start the calibration utility.



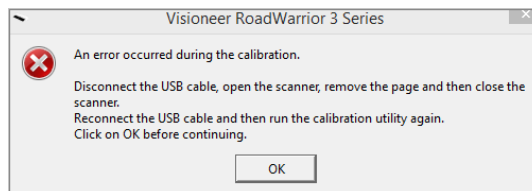
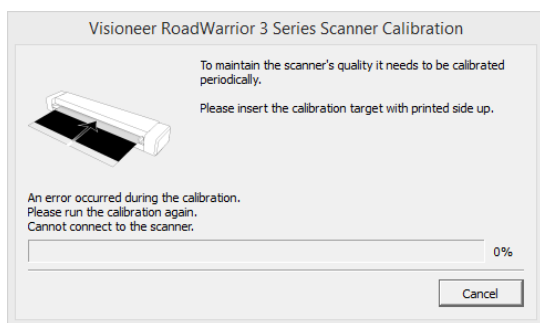
4. Place the calibration page, with the black bar *face up*, into the scanner.



5. The scanner pulls in the calibration page and feeds it slowly through the paper path.
6. When calibration is complete the scanner will clear the calibration page out of the scanner. Remove the calibration page when the utility prompts you to. Do not forcefully pull the page out of the scanner, the scanner will release the page when it has fully exited out of the scanner.

Calibration Error

If there is an error during calibration or if the scanner should disconnect during calibration. The error will display on-screen. If you see a message that calibration failed, please run the calibration utility again.



Note: if you attempted to calibrate the scanner with any page other than the calibration page provided with your scanner, the calibration routine will fail. You will need to power cycle the scanner, through unplug then re-plug of the USB cable, and then restart the calibration.

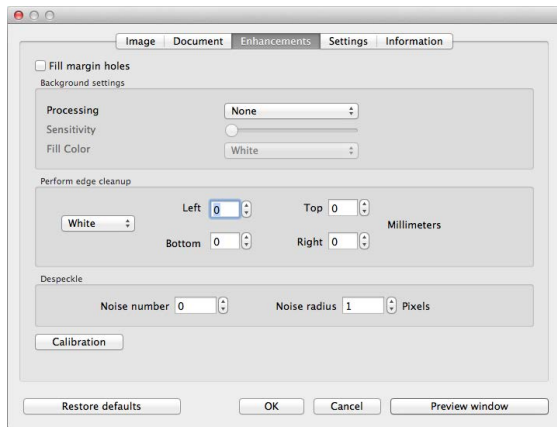
Mac

To calibrate the scanner:

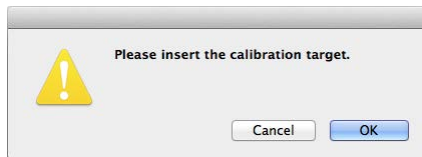
1. Open the scanner's TWAIN interface.

You can open the interface from a TWAIN scanning application or the Vioneer® Scan Utility application.

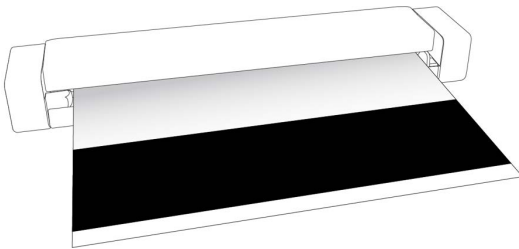
2. Click on the **Enhancements** tab.



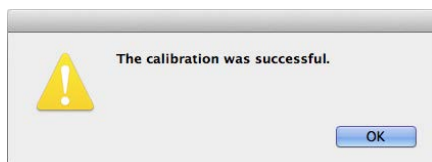
3. Click on the **Calibration** button to start the calibration utility.



4. Place the calibration page in the scanner as shown in the following image.

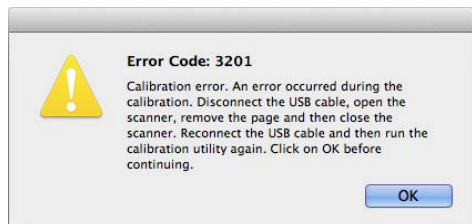


5. The scanner pulls in the calibration page and feeds it slowly through the paper path.
6. When calibration is complete the scanner will clear the calibration page out of the scanner. Do not forcefully pull the page out of the scanner, the scanner will release the page when it has fully exited out of the scanner.



Calibration Error

If there is an error during calibration or if the scanner should disconnect during calibration. The error will display on-screen. If you see a message that calibration failed, please run the calibration utility again.



Note: If you attempted to calibrate the scanner with any page other than the calibration page provided with your scanner, the calibration routine will fail. You will need to power cycle the scanner, through unplug then replug of the USB cable, and then restart the calibration

TROUBLESHOOTING

Problem: The scanner won't scan.

Check for one of these possible causes:

- **Are the cables loose or not plugged in securely?** Inspect the cable connections. Make sure the cables are plugged in securely.
- **Did you restart the computer and scanner?** If the scanner gets a paper jam, or loses connection because of an error, try restarting your computer and power cycling the scanner.
- **Is the scanner's status light on?** The scanner will automatically power off after a specified period of inactivity. When the scanner is powered off, firmly press the button on the scanner to turn the scanner on. You can adjust the amount of time before the scanner will power off in the scanner's hardware properties.
- **Did you plug the scanner into a USB hub?** If you're using a USB hub to connect the scanner try plugging the scanner's USB cable directly to the back of the computer. It is not recommended that you use the scanner with a USB hub, if you are using a hub, the hub must have its own power supply.
- **Is the USB cable 6' or less?** If you are using a USB cable that is longer than 6' you may lose connection to the scanner. The recommended USB cable length is 6' or less, the USB cable provided with your scanner is within this range.
- **Did you select another image source in the scanning software?** If you use multiple imaging devices with your computer, such as a camera, all-in-one printer, or another scanner, you may have selected another source for images. Make sure Vioneer® RoadWarrior™ Series Mobile Scanner is selected as the scanner.

Problem: Why does my scanner not function after performing a system restore on Windows?

The system restore process may have corrupted some of the driver components. It is recommended that you reinstall your scanner driver. Please refer to [Uninstalling Your Scanner](#) for installation instructions.

Problem: Why won't my scanner work after the computer has been sitting idle for several hours?

To resolve the problem, simply turn off the scanner power then turn it back on again. This may occur after Windows goes into power saving mode to "hibernate" the computer into a low power state. When you move your mouse or type on the keyboard it "wakes" the computer back up and restores full power to the system. This power fluctuation during the computer's hibernating period may sometimes cause the scanner to lose communication to the computer.

Problem: My computer keeps giving me out of hard drive space error messages.

The minimum requirement of free hard drive space is for the installation of the software and basic, low resolution, scanning. High resolution scans result in files that can be over 1 gigabyte in size. Free up some space on your hard drive for the software to be able to save the scanned images.

Problem: My computer keeps giving me out of memory error messages.

An "Out of memory" message may appear when scanning long pages at higher resolutions. This error is most often seen on Windows XP/ Mac OS X due to the large file size created when scanning long pages in color or grayscale at 300 dpi or higher. However, this error may occur on other operating systems as well. If you see an out of memory error message, please try adjusting the page length and/or scan resolution.

Problem: The paper jams in the scanner.

To reduce the number of paper jams, smooth and straighten the paper before scanning. If paper jams are occurring more frequently, try cleaning the roller with a soft cloth dampened with Isopropyl rubbing alcohol. Excessive dust on the roller can make it appear worn and will cause issues feeding paper. See [Cleaning the Scanner](#) for cleaning instructions.

Problem: The scanner is not showing in the Mac® image capture application.

To resolve the problem, simply log off then log back in or reboot your Mac®. This may occur after your computer goes into the "sleep mode" state to conserve power. When you move your mouse or type on the keyboard it "wakes" the computer back up and restores full power to the system. This power fluctuation during the computer's hibernating period may sometimes cause the scanner to lose communication to the computer.

Problem: Images are corrupted when scanning and saving as a GIF file format.

This is a known issue when using older versions of OS X, at this time the issue has been seen on 10.6 and 10.7 but you may see this problem on other versions of OS X as well. Please use a different file format when scanning if you are seeing corrupted image.

Problem: The driver installation fails with a notification that the system extension has been blocked.

This is due to a change made in OS 10.13 with regards to loading kernel extensions. When the notification is shown, follow these steps:

1. In the prompt, click **Open Security Preferences**.
2. Alternatively, open the **Security & Privacy** window of System Preferences.
3. Click **Allow** next to the notification that software from Vioneer has been blocked.

If the system has extensions from multiple developers blocked, a window will appear showing a list. Check the box next to Vioneer.

4. A message to reboot will be shown. This is necessary to enable the extension.

Note: The Allow button is only present in the Security & Privacy preferences window for 30 minutes. It reappears after the system is restarted.

Problem: If the USB cable is disconnected during a scan, the scanner does not reconnect when the USB cable is plugged back in.

Unplug the USB cable from the scanner, and then plug it back in. If the scanner does not reconnect:

1. Unplug the USB cable from the scanner.
2. Restart your computer.
3. After the restart is complete, plug the USB cable back in.

Status Light Troubleshooting

The status light indicates the current state of the scanner:

- **Steady blue**—indicates the scanner is receiving power. When the scanner driver is installed, it also means the scanner is ready to scan.
- **Blinking blue**—indicates that the scanner is busy (e.g. when scanning or calibrating).
- **Blinking red**—indicates that there is a hardware error.

Error Codes

If your scanner experiences a hardware error, the status light will blink red. It will flash in a numerical sequence, pause, then repeat the same number of flashes. The number of times the light blinks between pauses indicates the error code number. The following table describes the error codes.

Error Code	Problem Description	Solution
4	Paper Jam	Open the scanner and remove the jammed document. To reduce the number of paper jams, make sure the paper return is closed when scanning thick documents and plastic cards. Also make sure the paper guide is properly adjusted to the width of the item you are scanning. If the paper guide is too narrow for the paper being scanned, it will cause the paper to warp and get stuck in the paper path.
6	Cover Open	Make sure the scanner is fully closed after performing maintenance on the scanner or removing a jammed page. If needed, open and close the scanner again. If the problem persists, try power cycling the scanner through un-plug and re-plug of the USB cable.

Error Code	Problem Description	Solution
8	Calibration Error	<p>This may occur if the USB cable was unplugged during calibration, the calibration was canceled, or the calibration page was not used.</p> <p>First, power cycle the scanner through un-plug and re-plug of the USB cable, and then restart the calibration routine. Please refer to Calibrating Your Scanner for instructions.</p> <p>Make sure you have the scanner's calibration page ready when you start the calibration utility.</p>

UNINSTALLING YOUR SCANNER

Please leave the scanner's USB cable plugged into the computer while uninstalling the scanner driver. Unplug the USB cable when directed to do so in the instructions below.

Windows

Use the options in the Windows Control Panel to remove the scanner driver and modules, and any other software provided with the scanner.

Open the list of installed programs in the Windows Control panel.

- Windows 7 and later: Open Programs and Features

Uninstalling the scanner driver:

1. In the list of installed programs click on the **Vioneer RoadWarrior 3 Series driver**.
2. Click the **Change/Remove** or **Uninstall** button.
3. Click **Yes** when asked to confirm that you want to remove the driver.

When the driver uninstallation is complete the progress window will automatically close.

4. Turn off the scanner and unplug the USB cable.
5. Reboot the computer if you are prompted to do so.

Follow these instructions to remove any of the other software you installed with your scanner. Depending on the software provided with your scanner, and which applications you installed during the scanner setup, the application list may include:

- OneTouch
- OneTouch OCR module

Uninstalling Vioneer Acuity™:

Vioneer Acuity is automatically installed when you install the scanner driver. You can also download the Vioneer Acuity module from the support pages for your scanner at www.vioneer.com. Vioneer Acuity is a utility with advanced image processing options to instantly improve the visual clarity of anything you scan.

1. In the list of installed programs select **Visioneer Acuity Assets**.
2. Click **Yes** when asked to confirm you want to remove the software.

Depending on the method of installation, and your scanner model, there may be multiple entries for Visioneer Acuity in the installed programs list. The additional entries in this list are the image processing libraries needed to support various scanner models. These additional items will be called “Visioneer Acuity Assets” followed by a version number. In the scenario described here, when you want to uninstall Visioneer Acuity make sure you select and uninstall Visioneer Acuity. If you uninstall one of the entries labeled as an “asset” you will still need to uninstall the main Visioneer Acuity utility.

Mac

Uninstalling the scanner driver:

The TWAIN driver is stored in the TWAIN Data Sources folder, and DS is its file extension.

1. Disconnect the USB cable of your device.
2. In the Finder, browse to **Macintosh HD > Library > Image Capture > TWAIN Data Sources**.
3. Delete the DS file for your device.

Uninstalling Visioneer Scan Utility:

The Visioneer Scan Utility is in the macOS Applications folder.

1. In the Finder, browse to **Macintosh HD > Applications**
2. Delete the Visioneer Scan Utility.

The Image Capture Application (ICA) from Apple is used to transfer images from your scanner, and it is also in the macOS Applications folder. If no longer needed, then you can optionally delete it.

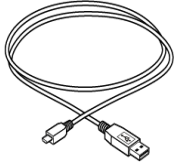

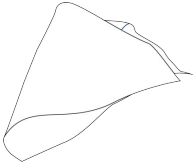
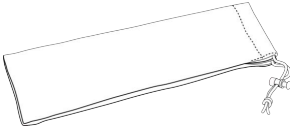
After deleting your files, empty the Trash contents, and restart your system.

VISIONEER® ROADWARRIOR 3 SERIES SPECIFICATIONS

Device Specifications	
Document Requirements	
Minimum Item Size	1.5 x 1.5 inches (38 x 38 mm)
Maximum Item Size	8.5 x 32 inches (216 x 813 mm)
Paper Thickness	16–32 lbs. (60–120 g/m ²)
Plastic Card	Non-Embossed cards up to 0.8 mm thick
General Specifications	
Scanning Speed (ADF)	11 SPP (seconds per page) @ 300 dpi
Optical Resolution	600 dpi

Device Specifications	
Output Bit Depth	24-bit color, 8-bit grayscale, 1-bit bitonal (black & white)
Scan Method	Single sheetfed
Image Sensor	Contact Image Sensor (CIS)
Light Source	RGB LED lamp
Interface	Hi-Speed USB 2.0
Certifications	FCC Class B, CE, USB-IF, WEEE, RoHS, ENERGY STAR
Operating Temperature	50° ~ 95° F (10° ~ 35° C without condensation)
Relative Humidity	15% ~ 85% (@25° C without condensation)
Scanner Dimensions	
Width	11.4 inches (290 mm)
Depth	2.2 inches (55 mm)
Height	1.5 inches (38 mm)
Weight	13.4 ounces (379 grams)
Power Information	
Scanner Rating	5Vdc, 0.5A
Power consumption	≤ 2.5 Watts (during operation) ≤ 0.5 Watt (on standby)
Cable Information	
USB cable	USB A(M)/MICRO B(M),4P/5P, L=1000mm, UL2725#28AWG, CA1004020332410, LONGWELL, COLOR:BLACK, W/CORE, 80°C, RoHS
Software Information	
Supported Operating Systems	<ul style="list-style-type: none"> • Microsoft: <ul style="list-style-type: none"> – 32-bit or 64-bit 7 (Service Pack 1) – 32-bit or 64-bit 10 – 32-bit or 64-bit 11 • Mac: <ul style="list-style-type: none"> – Apple® Mac OS X®
Scanner Drivers	<ul style="list-style-type: none"> • Microsoft: <ul style="list-style-type: none"> – TWAIN, WIA • Mac: <ul style="list-style-type: none"> – TWAIN, ICA
Bundled Software	<ul style="list-style-type: none"> • Microsoft: <ul style="list-style-type: none"> – Vioneer OneTouch® – Vioneer Acuity Module • Mac: <ul style="list-style-type: none"> – Vioneer® Scan Utility

VISIONEER® ROADWARRIOR 3 SERIES PARTS LIST

Part Name	Part Number	
USB Cable	35-0249-000	
Calibration Page	05-0885-000	
Cleaning Cloth	05-0884-000	
Carrying Bag (Not available with RoadWarrior Lite)	88-0666-000	

APPENDIX A: COPY REGULATIONS

UNITED STATES

Congress, by statute, has forbidden the reproduction of the following subjects under certain circumstances. Penalties of fine or imprisonment may be imposed on those guilty of making such reproductions.

1. Obligations or Securities of the United States Government, such as:

Certificates of Indebtedness	National Bank Currency	Coupons from Bonds
Federal Reserve Bank Notes	Silver Certificates	Gold Certificates
United States Bonds	Treasury Notes	Federal Reserve Notes
Fractional Notes	Certificates of Deposit	Paper Money

Bonds and Obligations of certain agencies of the government, such as FHA, etc.

Bonds. (U.S. Savings Bonds may be photographed only for publicity purposes in connection with the campaign for the sale of such bonds.)

Internal Revenue Stamps. (If it is necessary to reproduce a legal document on which there is a canceled revenue stamp, this may be done provided the reproduction of the document is performed for lawful purposes.)

Postage Stamps, canceled or uncanceled. (For philatelic purposes, Postage Stamps may be photographed, provided the reproduction is in black and white and is less than 75% or more than 150% of the linear dimensions of the original.)

Postal Money Orders.

Bills, Checks, or Drafts of money drawn by or upon authorized officers of the United States.

Stamps and other representatives of value, of whatever denomination, which have been or may be issued under any Act of Congress.

2. Adjusted Compensation Certificates for Veterans of the World Wars.
3. Obligations or Securities of any Foreign Government, Bank, or Corporation.
4. Copyrighted material, unless permission of the copyright owner has been obtained or the reproduction falls within the "fair use" or library reproduction rights provisions of the copyright law. Further information of these provisions may be obtained from the Copyright Office, Library of Congress, Washington, D.C. 20559. Ask for Circular R21.
5. Certificates of Citizenship or Naturalization. (Foreign Naturalization Certificates may be photographed.)

6. Passports. (Foreign Passports may be photographed.)
7. Immigration Papers.
8. Draft Registration Cards.
9. Selective Service Induction Papers that bear any of the following Registrant's information:

Earnings or Income	Dependency Status	Court Record
Previous military service	Physical or mental condition	

Exception: U. S. Army and Navy discharge certificates may be photographed.

10. Badges, Identification Cards, Passes, or Insignia carried by military personnel, or by members of the various Federal Departments, such as FBI, Treasury, etc. (unless photograph is ordered by the head of such department or bureau.)
11. Reproducing the following is also prohibited in certain states: Automobile Licenses — Drivers' Licenses — Automobile Certificates of Title.

The above list is not all inclusive, and no liability is assumed for its completeness or accuracy. In case of doubt, consult your attorney.

CANADA

Parliament, by statute, has forbidden the reproduction of the following subjects under certain circumstances. Penalties of fines or imprisonment may be imposed on those guilty of making such copies.

1. Current bank notes or current paper money.
2. Obligations or securities of a government or bank.
3. Exchequer bill paper or revenue paper.
4. The public seal of Canada or of a province, or the seal of a public body or authority in Canada, or of a court of law.
5. Proclamations, orders, regulations or appointments, or notices thereof (with intent to falsely cause same to purport to have been printed by the Queen's Printer for Canada, or the equivalent printer for a province).
6. Marks, brands, seals, wrappers or designs used by or on behalf of the Government of Canada or of a province, the government of a state other than Canada or a department, board, Commission or agency established by the Government of Canada or of a province or of a government of a state other than Canada.
7. Impressed or adhesive stamps used for the purpose of revenue by the Government of Canada or of a province or by the government of a state other than Canada.
8. Documents, registers or records kept by public officials charged with the duty of making or issuing certified copies thereof, where the reproduction falsely purports to be a certified copy thereof.
9. Copyrighted material or trademarks of any manner or kind without the consent of the copyright or trademark owner.

The above list is provided for your convenience and assistance, but it is not all inclusive, and no liability is assumed for its completeness or accuracy. In case of doubt, consult your solicitor.

OTHER COUNTRIES

Copying certain documents may be illegal in your country. Penalties of fine or imprisonment may be imposed on those found guilty of making such reproductions.

- Currency notes
- Bank notes and cheques
- Bank and government bonds and securities
- Passports and identification cards
- Copyright material or trademarks without the consent of the owner
- Postage stamps and other negotiable instruments

Note: this list is not inclusive and no liability is assumed for either its completeness or accuracy. In case of doubt, contact your legal counsel.

APPENDIX B: COMPLIANCE INFORMATION

PRODUCT RECYCLING & DISPOSAL

USA & Canada

If you are managing the disposal of your Visioneer® product, please note that the product may contain lead, mercury, Perchlorate, and other materials whose disposal may be regulated due to environmental considerations. The presence of these materials is fully consistent with global regulations applicable at the time that the product was placed on the market. For recycling and disposal information, contact your local authorities. Information for the U.S. can also be found on the Electronic Industries Alliance website.

Perchlorate Material - This product may contain one or more Perchlorate-containing devices, such as batteries. Special handling may apply.

European Union

RoHS and WEEE Compliance

This product is compliant with RoHS Regulations of the European Parliament and Council Directive on the Restrictions of the Use of Certain Hazardous Substances in Electrical and Electronic Equipment (2011/65/EU), and with the Waste Electrical and Electronic Equipment (WEEE) Directive (2012/19/EU).

Some equipment may be used in both a domestic/household and a professional/business application.

Professional/Business Environment

Application of this symbol on your equipment is confirmation that you must dispose of this equipment in compliance with agreed national procedures. In accordance with European legislation, end of life electrical and electronic equipment subject to disposal must be managed within agreed procedures.



